

dialog

Issue May 2016

EMW

Slit strip for
Haribo

IT-Systems

In-house test laboratory
for customer projects

Perforated Metal

Helicopter platform with
Perforated Metal

Container Systems

USA subsidiary
introduces itself

SCHÄFER Expanded Metal

A successful
start



EDITORIAL

02 Foreword by the management

TOP TOPIC

Expanded Metal

06 Sun protection with Expanded Metal

MARKET

SCHÄFER Group

03 IFEU – The new member in the SCHÄFER Group

SCHÄFER Container Systems

04 Fresh, cold, Kölsch – hotel room with integrated freshKEG dispensing system

05 Subsidiary in the USA

05 New field service for Great Britain and Ireland

Expanded Metal

Clean air thanks to Expanded Metal

EMW Steel Service Centre

08 Slit strip for the HARIBO's new central depot

09 EMW App – coil and steel calculator for your mobile

IBC

10 That's so cool – Containers for the storage of biological and medical samples

11 New welding robot in the Sudex plant

Perforated Metal

12 Helihoist components for wind parks with SCHÄFER Perforated Metal

IT-Systems

14 In-house test laboratory for customer projects

15 2nd place in the German Data Centre Awards

SCHÄFER SHOP

16 Online Shop utilizes SCHÄFER Group synergies

INTERNAL

18 Training has top priority at SCHÄFER

19 Management seminar at the Wiesensee

19 SCHÄFER trainees as training ambassadors for the Siegen Chamber of Commerce



Rainer Bröcher



Michael Mockenhaupt

Dear readers!

Thanks to the fantastic efforts of our colleagues, the year 2015 was also characterised by positive growth for SCHÄFER WERKE, which is continuing in 2016.

We are especially pleased that after less than a year, our youngest division, SCHÄFER Expanded Metal, can not only look back on a high level of acceptance on the market, but also on the successful realisation of a number of interesting and varied projects. (P. 6 and 7)

But also in our traditional divisions, there are always new applications which our teams develop and realise together with our customers. We hope that the selected examples in this issue of dialog will be able to give a true reflection of this dynamism.

The constant exchange of information between all divisions within our company will ensure that, together with our customers and partners, we will continue to write the success story of SCHÄFER WERKE and EMW in future.

We hope you enjoy reading the magazine and wish you continuing success for the current year.

On behalf of the Schäfer family and all our staff, we send you our best regards and a heartfelt Siegerland "Glück auf"!

Rainer Bröcher
Managing director SCHÄFER WERKE

Michael Mockenhaupt
Managing director EMW Steel Service Centre

Credits

Published by: SCHÄFER WERKE GMBH **Responsible:** Rainer Bröcher and Marketing

Editorial address: SCHÄFER WERKE GMBH, Pfannenbergstraße 1, D-57290 Neunkirchen

Telephone: +49 (0) 2735/787-01 **Fax:** +49 (0) 2735/787-249 **E-Mail:** info@schaefer-werke.de

Internet: www.schaefer-werke.de

Layout: conception Kommunikationsagentur GmbH, Siegen **Print:** braun-network GmbH, Neunkirchen

Picture credits: P. 4 Brauerei zur Malzmühle Schwartz GmbH & Co. KG, Köln; P. 6 Hype GmbH, Kötz; P. 7 ADEK Bauteile GmbH, Erkrath; P. 8/9 HARIBO GmbH & Co. KG, Bonn; P. 10/11 Cryotherm GmbH & Co. KG, Kirchen; P.12/13 large: Servion Holding GmbH, Hamburg; P. 12 small and P. 13 small, FASSMER GmbH & Co. KG, Berne; P. 7 and 8: iStock

Reproduction with permission free of charge



New member in the SCHÄFER Group

Since October 2015, the Institut für Entsorgung und Umwelttechnik (IFEU) (Institute for Waste Disposal and Environmental Technology) from Iserlohn has been part of the SCHÄFER Group.

Besides Information Management for Disposal Logistics (IMELO), IFEU has focussed on providing comprehensive and highly qualified consulting since 1999. This enables the SCHÄFER Group to significantly extend their environmental competence and opens up new possibilities for SCHÄFER WERKE customers.

In environmental consulting, IFEU has established itself regionally and nationally as a recognized and reliable partner for a wide range of issues regarding environmental law and energy technology.

A major focus is supporting mainly small and medium-sized trade and industrial enterprises in processing tasks arising from environmental law, in particular in waste and water legislation, emission control and other energy-related topics.

Environmental consulting is divided into the categories "Hazardous materials management and the system of officials", "Management of permits and government authorities" and "Management systems and energy consulting".

The comprehensive consulting portfolio for the environment sector includes the compilation of risk assessments, the optimisation of commercial and industrial energy processes, the compilation of legally compliant approval documents, the preparation, taking on of and support in consultations with government authorities, as well as the development, maintenance and improvement of management systems, such as DIN EN ISO 14001, 50001 and 9001, etc.

The high standard of qualification and the long-standing professional experience of the IFEU team in various sectors are great advantages when it comes to dealing with environmental topics. Regular training and further training programmes guarantee a continuous and sustainable standard of consulting quality. Besides, the IFEU is also incorporated in a network of countless partners and specialist institutes so that cross-discipline issues can be dealt with from a single source.

If you need any further information, visit www.ifeu-iserlohn.de or send an e-mail directly to info@ifeu-iserlohn.de.

Trade Fairs 2016



Siegen Vocational Training Fair
01. – 02.06.2016, Siegen, Siegerlandhalle



Metalforum Posen
Exhibition for the metal working industry
07. – 10.06.2016, Poznan/Poland



JOBS-SI Siegen
Job fair in Siegen
07. – 08.09.2016, Siegen, Siegerlandhalle

FILTECH

The Filtration Event
11. – 13.10.2016, Cologne



IT-Security Expo and Congress
18. – 20.10.2016, Nuremberg



International Suppliers Fair
18. – 20.10.2016, Wolfsburg, Allerpark



Int. Trade Fair for Sheet Metal Processing
25. – 29.10.2016, Hanover

BrauBeviale2016

Capital Goods Exhibition for the entire Supply Chain of Beverage Production
08. – 10.11.2016, Nuremberg



INTERVITIS INTERFRUCTA
Technology for wine, juice and special crops
27. – 30.11.2016, Stuttgart



VINITECH SIFEL
Int. trade show for the wine, fruits and vegetable production sector
29.11. – 01.12.2016, Bordeaux/France



Fresh, cold, Kölsch

Fresh draught beer with freshKEG. In the bathroom, you can shower, dry your hair and have beer – because the hotel room also has an integrated beer tap with the hotel's own Mühlen Kölsch.

■ The traditional brewery “zur Malzmühle” with its own brauhaus pub has been located at “Heumarkt” in the heart of Cologne’s historic “Old Town,” since 1858. Today, this enterprise is in the fifth generation of family ownership and offers its visitors a very special all-round package. Starting with the classical Kölsch and selected Craft beer* creations, it continues right up to event locations and accommodation: the all-pervading topic is brewing tradition and the brewery’s very own Mühlen Kölsch.

The 37 modern, rustic-style rooms of the brewery’s own “Hotel zur Malzmühle” have been furnished with great attention to detail and to the beer. As the building’s north side faces Cologne Cathedral, guests can enjoy a wonderful view of the world famous building from all the rooms. Warm wooden tones and unobtrusive colours

underline the hotel’s country-style chic. The brewery motif is reflected especially in the design of the beds, which is based on oversized wooden beer barrels. And in six of the bathrooms, there’s a rather special



highlight. Three taps, hot, cold and Kölsch. Next to the water taps, there’s an additional “Kölsch” tap, with which guests can tap and enjoy a fresh draught beer in their rooms. An extra touch that, in this form, no other hotel has to offer.

The secret lies in a 5-litre freshKEG supplied by SCHÄFER. The integrated CO₂ dispensing gas supply, based on the dual chamber principle developed by SCHÄFER Container Systems, enables the KEGs to be replaced quickly and easily. This cuts down the work involved in installing new freshKEGs in the Hotel zur Malzmühle to a minimum.

And it also guarantees that the beer is always fresh and full of flavour at any time.

* “traditionally brewed beers” produced in small quantities in so-called micro breweries. By using various natural aromas and additives, a wide range of different flavours can be achieved.



www.schaefer-container-systems.com



Go West

On March 15th, 2015, SCHÄFER WERKE GMBH founded a new subsidiary in the USA: SCHÄFER Container Systems North America, Inc. (SCSNA for short).

■ SCSNA has rented offices and storage facilities in Atlanta, which now serves as the base for marketing container systems for beverages (KEGs) as well as stainless steel IBCs and special containers. To be able to supply breweries and KEG distributors as quickly as possible, many KEGs are available straight from stock in Atlanta. In addition, a great range of customizing possibilities has been created for applying customer logos and advertising slogans to the KEGs, for instance. In doing so, SCSNA puts its focus squarely on KEG sales, as the US market is regarded as the largest in the world.

Last year, the now 8-person team around managing director Steve Markham was already able to win over renowned "craft brewers", like Sun King Brewing, Sixpoint Brewing and Tampa Bay Brewing and is now strategically further extending its market position in the craft brewing segment.



SCHÄFER Container Systems on a visit to SCSNA in Atlanta with some of the team members: (left to right) Steve Markham (President), Neal Schmidt (Operations Manager), Cory Massie (Director of Sales), Guido Klinkhammer (Container Systems Business Unit Sales Director), April Clemons (Team Leader/Sales Support), Josh Fast (Marketing & Communications Manager), Rainer Bröcher (SCHÄFER WERKE Managing Director) and Kasey Gordon (Team Lead Operations)



"Good Luck" in Great Britain

With Mr. Mike Hickman, we've been able to gain an experienced colleague for our field service in the UK and Ireland. Mike Hickman was a representative for SCHÄFER Container Systems for over 8 years and so we continue to wish him "Good Luck" and are more than pleased about the new addition of an old friend to our Container-Systems family.

SCHÄFER 
CONTAINER SYSTEMS

■ Reusable container systems
for the beverage industry

SCHÄFER WERKE GMBH

Pfannenbergstraße 1

D-57290 Neunkirchen

Tel. +49 (0) 2735/787-565

Fax +49 (0) 2735/787-493

info@schaefer-container-systems.de

www.schaefer-container-systems.com

Sun protection with Expanded Metal

New design at the Parler Gymnasium in Schwäbisch Gmünd – Hype GmbH from Kötz breaks new ground with SCHÄFER Expanded Metal.

Expanded metal need not always be “invisible”, though it is used in a great variety of applications that often cannot be seen. In house construction, for instance, expanded metal is used as a plaster base, but once the plaster has been applied, you can no longer see it.

Hype GmbH, the facade professionals from South Germany, is continuously searching for new ways to providing facades with an individual, sustainable appearance. Hype plans, delivers and mounts facade and sun protection solutions for buildings of all kinds. The creative combination of widely different materials creates an individual and unmistakable design.

For the project at the Parler Gymnasium in Schwäbisch Gmünd, an innovative sun pro-

tection solution was needed. The requirements were clearly defined: protect against summer heat and provide privacy, while maintaining transparency in both directions. The sun protection elements had to blend in with the school’s existing architecture and form a harmonious symbiosis of the new and the old.

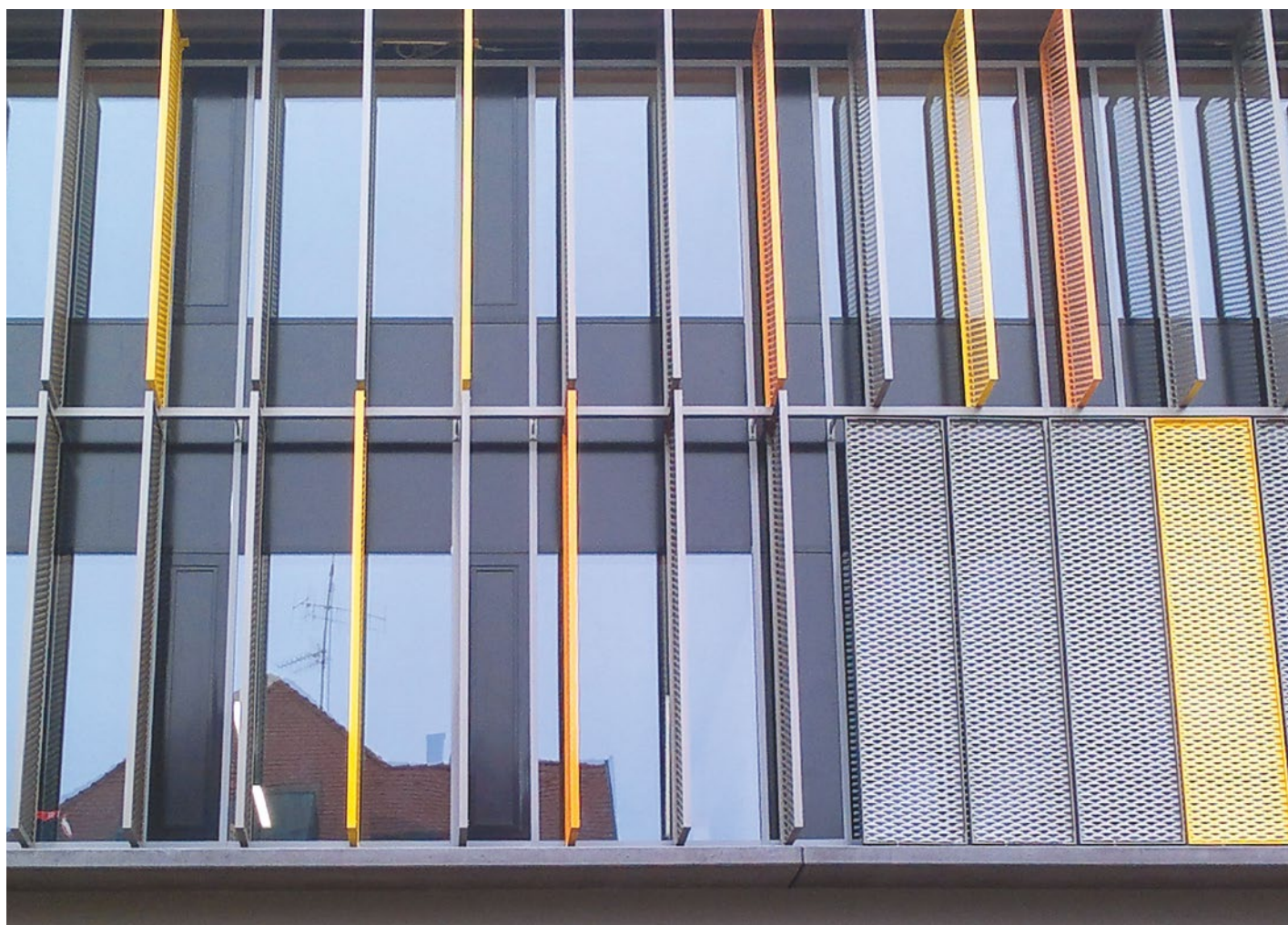
The solution implemented consists of vertically installed lamellas made of coarse-mesh expanded metal from SCHÄFER. To react flexibly to changing temperature and light conditions, the lamellas can be turned electrically up to 90°. The multi-coloured coatings of individual expanded metal sun protection elements in zinc yellow, pastel yellow and pearl mouse grey provide the colour contrasts. Only innovative solutions meet the



high creative and functional demands of the architects. Besides aesthetic and functional aspects, the reduction of cooling loads and the resulting optimization of energy requirements play a significant role. In this concept, expanded metal is a visible design component, which also adds a highly convincing functional aspect. The high strength and durability of expanded metal enables solutions to be implemented that genuinely sustainable.



www.schaefer-streckmetall.de





Clean air thanks to Expanded Metal

Extractor hoods are useful kitchen devices that have become indispensable in modern households.

They draw in cooking vapours and steam that spread grease and odour-forming particles throughout the kitchen and pass them through a filter, which absorbs the grease, removing it from the air.

■ Today, these filters are mainly made from expanded metal sheets layered one above the other. Due to its optimal surface deformation, expanded metal allows air to pass through, while presenting enough surface area for grease and dirt particles to stick to. Compared to the previously used fabric filters, the energy balance of these filters is significantly better. On the one hand, the energy needed to conduct the air through the expanded metal sheets is considerably lower, and on the other, expanded metal filters last much longer, making them environmentally friendlier. Instead of throwing them away, they can be put into the dish washer or washed by hand in soapy water and used repeatedly.

ADEK Bauteile GmbH from Erkrath has been manufacturing filter elements and components for exhaust air systems for over 20 years. Beginning of 2016, they began purchasing

the material for their filter elements from SCHÄFER Expanded Metal. The young division was able to impress especially with competent consulting, high material quality and fast delivery times – last but not least due to their outstanding synergy with the EMW Steel Service Centre, which also belongs to the SCHÄFER WERKE Group.

In cooperation with SCHÄFER Expanded Metal, ADEK Bauteile GmbH offers its customers grease filters of the highest quality for many different applications, including extractor hoods and downdraft systems.

The application fields for expanded metal are incredibly diverse and there is still no limit in sight. Especially the filter technology offers a broad spectrum of applications for expanded metal.



www.schaefer-streckmetall.de

SCHÄFER 
EXPANDED METAL

- Diamond mesh
- Round mesh
- Square mesh
- Hexagonal mesh
- Decorative mesh
- Special mesh

SCHÄFER WERKE GMBH
Pfannenbergstraße 1
D-57290 Neunkirchen
Tel. +49 (0) 2735/787-06
PC-Fax +49 (0) 2735/787-1377
info@schaefer-streckmetall.de
www.schaefer-streckmetall.de



Slit strip

for HARIBO's new central depot

On the industrial estate, "Innovationspark Rheinland" near the company's current location in Bonn, the sweets manufacturer HARIBO is being built in the Grafschaft district.

■ Right next to the A61 motorway, on an area of around 27 hectares, an administration building, modern production lines and a logistics centre is under construction for gold bears, liquorice wheels, chewy sweets and all the rest. The general contractor responsible for the turnkey construction of the logistics centre is a member of the SCHÄFER Group, SSI SCHÄFER which is in charge of the building and logistics operations. By the Summer of 2017, the systems supplier will build an approx. 40 metre high bay rack (HBR) with around 100,000 storage spaces for pallets.

For this project, SSI SCHÄFER can draw on proven synergies with their sister enterprise SCHÄFER WERKE and the EMW Steel

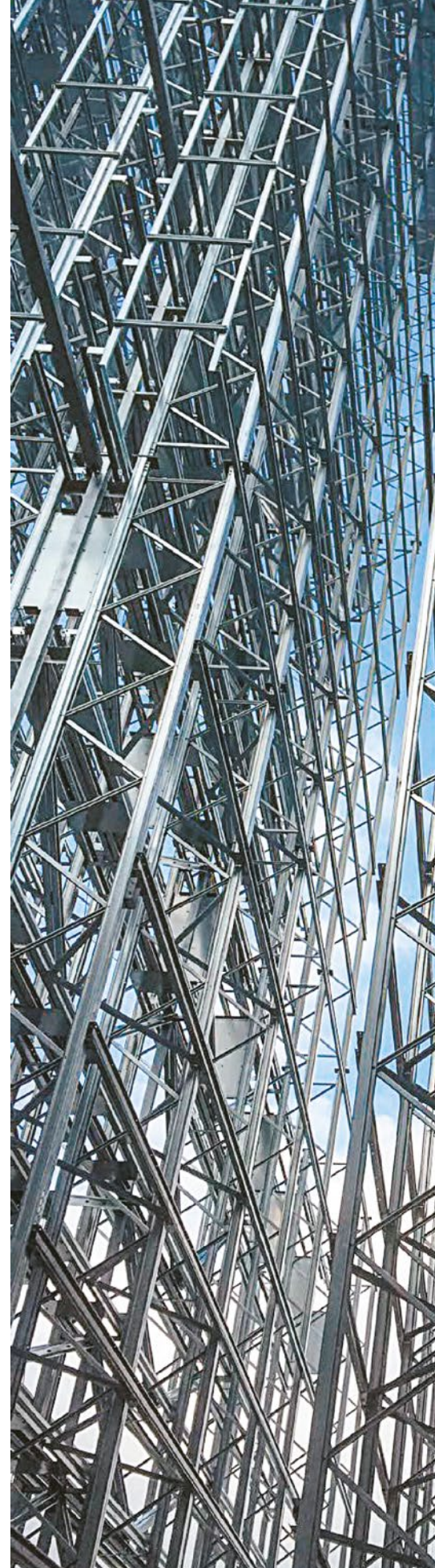
Service Centre. The steel processed as slit strip on the Pfannenberg in Neunkirchen finds its way later into the confectionery manufacturer's depot.

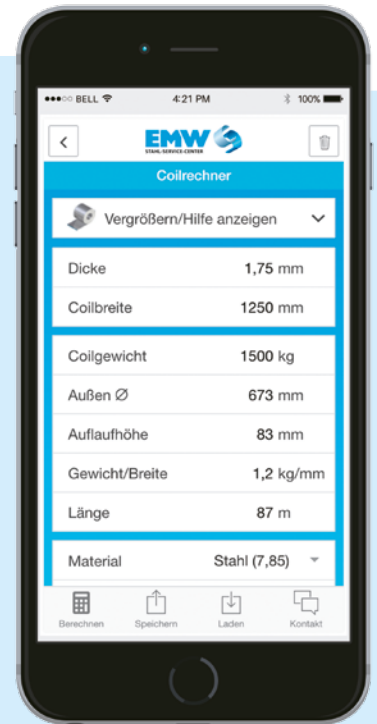
Over 20 energy-efficient storage and retrieval cranes ensure the products can be stored and retrieved again reliably. And SSI SCHÄFER will also equip the in-coming goods, dispatch and loading areas. This will result in a semi-automated order-picking section, a packaging section and a manual storage area on several floor levels.

In accordance with an intelligent materials flow concept, all storage and operation areas are linked to each other via two in-floor conveyor circuits and a high-efficiency conveyor system of around 2,600 metres in length. To enable pallets to be transported straight from the production line, the production building will be connected to the logistics centre by a bridge. For inventory management and process control, HARIBO counts on logistics software from SSI SCHÄFER.



www.emw-stahlservice.com





EMW APP

To make things even more convenient for their customers, a **Coil and Steel Calculator** from EMW Steel Service Centre is available at **iTunes** and **Google Play**.

Simply download it for free and conveniently calculate your coil or package weights, dimensions and much more on your smartphone.



- Coils
- Slit strip
- Cut-to-size blanks
- Circular blanks

EMW Stahl Service GmbH
 Pfannenbergstraße 1
 D-57290 Neunkirchen
 Tel. +49 (0) 2735/787-02
 Fax +49 (0) 2735/787-484
 info@emw-stahlservice.de
 www.emw-stahlservice.com

That's so cool –

Cryo banks store biological and medical samples at icy temperatures

Cryotherm GmbH & Co. KG from Kirchen on the Sieg is the specialist for developing and manufacturing vacuum super insulated storage and transport containers. The diversified product range covers solutions for industry, the biological and medical fields, food, space and research.

■ The long-standing partnership between Cryotherm and SCHÄFER has given rise to a great number of innovative products.

One very important application of cryotechnics is the long-term storage of medical, biological and ecological materials at temperatures of around -180°C , using liquid nitrogen. This cryoconservation is currently the only way of storing animal, plant and human cells and cell structures viably for almost unlimited periods and allowing them to be reanimated at a required time.

To fulfil the extremely high demands required in this field, special containers had to be developed. In the BIOSAFE® range developed by Cryotherm, the stainless steel containers have a very high thermal quality with extremely low evaporation rates, thanks to their vacuum super insulation. The surfaces, even on the vacuum insulated, user-friendly designed cover, are smooth and easy to disinfect. The container height is low and the cover has an ergonomic lift/swivel mechanism, enabling samples to be inserted and removed easily.

The sample receptacles inside the container need to be as diverse as the samples themselves. So the internal rack systems, with their high storage capacities and low weights, have been optimised to achieve space-saving yet clearly organised sample storage.



For safe storage, the temperature must be checked constantly



Liquid nitrogen ensures temperatures of -180°C

Safe and reliable long-term storage of the samples requires all relevant temperature parameters to be monitored and controlled at all times. In order to guarantee, that sample temperatures can be kept permanently and sustainably below -180°C , the liquid nitrogen level has to be checked continuously. Using APOLLO®-supply containers, which are also based on a SCHÄFER Container Systems' solution, liquid nitrogen is replenished in keeping with the evaporation rate. A fail-proof monitoring solution checks the entire system permanently and ensures a maximum safety-level.



www.schaefer-container-systems.com

Fully automatic, flexible, fast

New welding robot at SCHÄFER Sudex s.r.o.

■ The new fully automatic welding robot operates in two separate welding chambers to achieve maximum flexibility and the reduction of setting times. The individual welding parts are first fixed in separate welding jigs and then welded automatically.

In future, small components and assemblies will also be manufactured in addition to complete IBCs and large-volume containers.

In contrast to hand welding, the quality of the weld seam quality as well as its reproducibility can be achieved much more regularly, which enables series products to be manufactured much more efficiently.



SCHÄFER 
CONTAINER SYSTEMS

- Standard and special containers in stainless steel
- Hazardous goods containers
- Ion exchangers

SCHÄFER WERKE GMBH
Pffannenbergstraße 1
D-57290 Neunkirchen
Tel. +49 (0) 2735/787-578
Fax +49 (0) 2735/787-580
ibc@schaefer-container-systems.de
www.schaefer-container-systems.com

Production location Czech Republic:
SCHÄFER-SUDEX s.r.o.
Podolí 5
CZ-58401 Ledec nad Sázavou
Tel. +420/569 711-291
Fax +420/569 711-292
info@schaefer-container-systems.cz
www.schaefer-container-systems.com

High flyers

In the age of renewable energies, the sight of wind farms is meanwhile a quite normal part of the landscape, especially in coastal regions. More than all other methods, wind generation is responsible for the largest proportion of renewably produced power.



Assembling a helihoist at a lofty height

■ In wind power facilities, the kinetic energy of the air drives giant rotors which can often be seen on the horizon many kilometres offshore. Similar to a bicycle-dynamo, the blades rotate gears inside the windmill which drives a giant generator. In this way the wind energy is converted into electricity. To make sure such large facilities operate smoothly, they undergo regular maintenance and repair. Some of the largest are serviced by helicopters that airlift the technicians directly onto the turbine gondola. To guarantee the technician's safety in windy weather conditions, lots of wind turbines are equipped with a so-called helihoist platform,

a kind of open cage allowing safe access to the turbine gondola.

The internationally operating company FASSMER, headquartered in Berne near Bremen, manufactures this type of deck equipment. In cooperation with SCHÄFER Perforated Metal, it produces helihoist components for wind farms. Perforated metal profiles are mounted around the steel substructure to make a platform, on which service technicians can move and work in safety. Thanks to their low weight and high stability, perforated sheets meet the demands of statics and safety that wind turbines require. To guarantee consistent material quality in



the tough climatic surroundings of the open sea, surface tests were carried out well in advance and Fassmer also applied a special coating to the sheets for use at sea. Today, perforated sheets from SCHÄFER are securing safety on 72 wind turbines.



www.schaefer-lochbleche.de



Production at FASSMER GmbH & Co.KG in Berne

SCHÄFER

PERFORATED METAL

- Coil to coil perforation
- Perforated sheets to customer specification
- Perforated sheets straight from stock
- Machining service

SCHÄFER Lochbleche GmbH & Co. KG

Pfannenbergstraße 1

D-57290 Neunkirchen

Tel. +49 (0) 2735/787-05

Fax +49 (0) 2735/787-528

info@schaefer-lochbleche.de

www.schaefer-lochbleche.de



In-house test laboratory for customer projects

Since the beginning of the year, SCHÄFER IT-Systems has had its own test lab in the Betzdorf plant.

Cooling concepts, enclosures, individual environments, prototypes and sample designs can all be tested and evaluated in the new lab, together with customers and partners.

■ “In view of the ever more complex customer demands in connection with our constantly growing product portfolio, we have now built a test lab for our customers, so that we can together test any planned solutions thoroughly before the implementation stage. In addition, we can also simulate existing data centre situations and conse-

quently go much deeper into the technical challenges our customers face”, says Thomas Wermke, Business Unit Sales Director for IT-Systems. Using sophisticated technology, the current situation in existing data centres can be recreated 1 to 1 in the test lab and evaluated. Customer-specific cooling scenarios can be simulated, as can the energy

efficiency of different infrastructures within the data centre, for example. The lab also has enough floor space to extensively test prototypes and bespoke customer solutions. At the same time, SCHÄFER IT-Systems’ customers can take the opportunity to obtain an overview of the manufacturing depth at the Betzdorf plant at any time.



This way, customers and partners can get a complete picture of their individual data centre solution from SCHÄFER IT-Systems, and see the proof that investment in both existing and future data centres is safe. "For SCHÄFER, the priority in every project lies in providing future-oriented, sustainable solutions. We want our customers to be able

to work with an efficient solution in the future, too, and want to keep any risks to a minimum right from the beginning," Wermke continues. The first step of an actual-state analysis on the energy efficiency of existing cold or warm aisle concepts can also be carried out on site at the customer's premises. Potential weak points can be discovered quickly and

concrete measures for optimization can be worked out before the actual planning phase begins.



www.schaefer-it-systems.com

SCHÄFER IT-SYSTEMS

- IT rack solutions for server and network cabinets
- Data centre and water-cooled server cabinet solutions

SCHÄFER Ausstattungs-Systeme GmbH
Pfannenbergstraße 1 · D-57290 Neunkirchen

Sales and production:

Industriestraße 41 · D-57518 Betzdorf

Tel. +49 (0) 2741/283-770

Fax +49 (0) 2741/283-798

sales@schaefer-it-systems.de

www.schaefer-it-systems.com

2nd place in the German Data Centre Awards



In a gala event hosted by the networking platform "Future Thinking", a German Data Centre prize has been awarded in a range of different categories since 2011. The prize rewards innovative products and projects, which deal with the topics of energy efficiency for data centres. The event also offers candidates the opportunity to publicise their entries within the industry. This year, along with 14 other candidates, SCHÄFER IT-Systems entered its newly developed side cooler solution in the category "Data Centre Climate Control and Cooling" and was voted into 2nd place by the jury.

Online Shop utilizes SCHÄFER Group synergies

Sister enterprise SCHÄFER SHOP, located in Betzdorf and part of the SCHÄFER Group, is upgrading its internet presence and winning both approval and awards.



The SCHÄFER SHOP mail order business, which sells office furniture and equipment, as well as warehouse and shop floor equipment, is regarded today as one of the leading full range suppliers for businesses. Besides the Shop Catalogue, SCHÄFER SHOP also operates its Online Shop, both for private and business customers. Here, the customers can select their individual solutions for their offices, workshops or factories from a product portfolio consisting of over 45,000 articles. SCHÄFER SHOP's success is based on

simple, proven principles: reliability, quality and value for money. The broad spectrum of products and services shows the company is keeping to these principles with the launch of its new Online Shops. From office planning to online consulting and customized manufacturing, all customers' wishes will be fulfilled.

With this concept, the Online-Shop was also able to convince the Deutsche Gesellschaft für Verbraucherstudien mbH (German Society for Consumer Research) and gained the "Service Award 2015", and the title

"Top Shop 2015" from the magazine "Computer Bild".

When you set up your own customer account, your order history and the traceability of shipment and returns means the ordering process remains transparent at all times. As a further service, customers can subscribe to a newsletter, informing them of additional or special offers and new products.

Besides office supplies and advertising materials of all kinds, SCHÄFER SHOP also stocks a range of different cabinet systems.



Many of these steel cabinets are developed and manufactured by the sister enterprises, SCHÄFER Interior Systems und SCHÄFER Industrial Solutions, and sold through SCHÄFER SHOP.

For this, the mail order giant utilizes the synergies within the SCHÄFER Group to be able to guarantee its customers the highest quality and fastest delivery times.

This smooth exchange between SCHÄFER SHOP and the SCHÄFER WERKE divisions regularly leads to new developments and optimised solutions in steel, so that online customers can also be offered a constant stream of new products. The product portfolio of steel equipment and furnishings includes office and archiving cabinets for administration tasks, with a reputation for being especially functional, easy to clean, strong and durable. For workshops and factories, the products developed include materials cabinets, PC enclosures and

sound-proof partitions (see report in the dialog 11/2015 issue).

The value creation chain within the SCHÄFER Group goes even further, stretching from the delivery of the basic materials through the EMW Steel Service Centre to production and assembly by SCHÄFER Interior Systems and SCHÄFER Industrial Solutions, up to sale and distribution by SCHÄFER SHOP and finally handling and logistics by the SCHÄFER service company. A further synergistic effect between SCHÄFER SHOP and the SCHÄFER WERKE divisions is the link to SCHÄFER IT-Systems. The SCHÄFER SHOP data centre was equipped completely by the manufacturer of data centre components.



www.schaefer-werke.de
www.schaefer-shop.de

SCHÄFER 
INTERIOR SYSTEMS

- Furniture systems for office and administration
- Equipment for workshop and factory

Tel. +49 (0) 2741/283-770
 Fax +49 (0) 2741/283-798
 info@schaefer-werke.de
 www.schaefer-werke.de

SCHÄFER 
INDUSTRIAL SOLUTIONS

- Standard and made-to-measure housing solutions
- Complex metal assemblies
- Machine cladding
- Punched and bent parts

Tel. +49 (0) 2741/283-780
 Fax +49 (0) 2741/283-798
 info@schaefer-industriehaeuse.de
 www.schaefer-industriehaeuse.de

SCHÄFER Ausstattungs-Systeme GmbH
 Pfannenbergstraße 1 · D-57290 Neunkirchen

Sales and production:
 Industriestraße 41 · D-57518 Betzdorf



Managing partner Theo Schäfer (centre) and shareholder Beate Schäfer-Henrichs (right) with their trainees at the traditional end-of-year gathering.

Tradition is a big deal

■ A good working climate and the well-being of their employees are matters very close to the hearts of our owner family. And so, the managing partner Theo Schäfer would never want to miss the opportunity to discuss things openly with his youngest employees, too. At the end of the year, he traditionally invites all trainees to a Christmas dinner and gives them the opportunity to put their questions and ideas to him directly. It's important to Herr Schäfer to be accessible for "his apprentices", to listen to them

and present the traditions and values of the family business to them personally. That his door is always open for every single one of his employees is a fact he frequently emphasises and a symbol of the company's cross-generational view of its values. Successful growth, above all, required satisfied employees, who feel encouraged in their own interests and their sense of regional responsibility. That in turn strengthens the family business and creates stability and quality.

SCHÄFER WERKE – only strong together



Participants at the Wiesensee management seminar

■ On 18th. and 19th. February 2016, The SCHÄFER WERKE management and the divisional and departmental managers from engineering, sales and marketing met at the Wiesensee in the Westerwald region for a management seminar. In various group and project tasks, common optimization potential was searched out and transformed into concrete measures.

The project groups will now work together on the prioritised topics to ensure the operations of the individual divisions can be more closely interlinked in future. The enormous product variety, the high degree of innovation and the united management team at SCHÄFER WERKE will continue to write the success story of our enterprise in future, too.

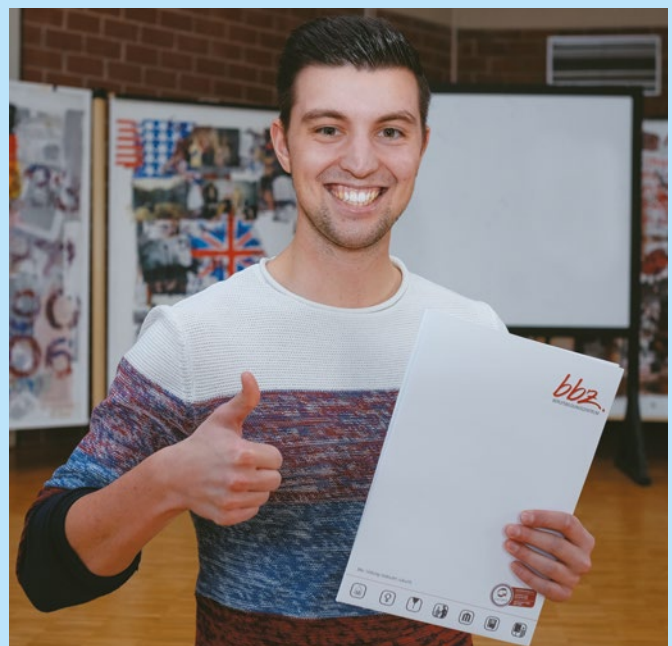
Training – at first hand

Every year numerous young people set an important milestone for their future by starting their vocational training at SCHÄFER WERKE. Here, the trainees learn important fundamentals for their future careers and often complete their courses with exam results that are well above average.

Because they really enjoy learning and working, trainees like Dennis Göldner and Jan-Niklas Plaum would like to recommend their chosen professions and the company training them to other youngsters. Therefore the two young men have been active in the role of training ambassadors at the Siegen Chamber of Commerce vocational training centre (BBZ) since 2015.

They provide young people with authentic insights into their daily working routines when they visit local schools. This first-hand exchange of information from trainee to potential trainee intended to make it easier for the students to ask questions and make their potential future careers seem more directly accessible.

In return, the training ambassadors receive advance help in improving their own presentation techniques and rhetorical skills, are able to prove their own technical competence and, in recognition of their commitment a additional qualification, are awarded a certificate by the BBZ Siegen.



Dennis Göldner with the certificate for his activities as a training ambassador for the Siegen Chamber of Commerce

Our locations



Head office and production plant in Neunkirchen (D)



Plant in Betzdorf (D)



Plant in Ledeč nad Sázavou (CZ)

SCHÄFER WERKE

SCHÄFER WERKE is an owner-led group of companies based in Neunkirchen/Siegerland and consists of five business divisions, SCHÄFER Container Systems, SCHÄFER Perforated Metal, SCHÄFER Expanded Metal, SCHÄFER Interior Systems and the EMW Steel Service Centre. The work of all these divisions is based on high-quality fine steel sheet. The processing of this material is one of the core competencies of this enterprise.

EMW Steel Service Centre

As one of the largest independent Steel Service Centres, EMW supplies coils, slit-strip, cut-to-size blanks and circular blanks to the manufacturing industry. The company, which celebrated its 60th anniversary in 2012, combines decades of experience and expertise in steel services with the very latest in logistics. In over 32,000 m² of storage space, EMW has around 100,000 tons of thin steel sheet in almost all current market grades permanently in stock.



SCHÄFER WERKE GMBH
Pfannenbergstraße 1 · D-57290 Neunkirchen
Telefon +49 (0) 2735/787-01 · Telefax +49 (0) 2735/787-249
info@schaefer-werke.de · www.schaefer-werke.de

